

Anti-PSMD13 antibody (260-340) (STJ190446)

STJ190446

GENERAL INFORMATION

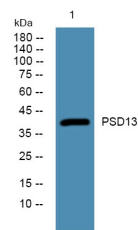
Product Type	Primary antibodies
Short Description	Rabbit polyclonal antibody anti-26s Proteasome Non-Atpase Regulatory Subunit 13 (260-340) is suitable for use in Western Blot and ELISA research applications.
Applications	WB, ELISA
Host/Source	Rabbit
Reactivity	Human, Mouse, Rat

PRODUCT PROPERTIES

Clonality	Polyclonal
Clone ID	
Concentration	1 mg/mL
Conjugation	Unconjugated
Purification	The antibody was affinity-purified from rabbit anti-serum by affinity-chromatography.
Dilution Range	WB 1:500-2000 ELISA 1:5000-20000
Formulation	PBS, 50% Glycerol and 0.02% Sodium Azide.
Isotype	IgG
Storage	Store at -20°C for up to 1 year from the date of receipt, and avoid repeat freeze-thaw cycles.
Instruction	

TARGET INFORMATION

Gene ID	5719
Gene Symbol	PSMD13
Uniprot ID	PSD13_HUMAN
Immunogen	Synthesized peptide derived from human protein at aa range 260-340
Immunogen Region	260-340
Specificity	PSMD13 polyclonal antibody (26s Proteasome Non-Atpase Regulatory Subunit 13) binds to endogenous 26s Proteasome Non-Atpase Regulatory Subunit 13 at the amino acid region 260-340.
Immunogen Sequence	



Western blot analysis of lysates from PC12 cells, primary antibody was diluted at 1:1000, 4°C over night