

Anti-CREB3L4 antibody (200-280) (STJ190423)

STJ190423

GENERAL INFORMATION

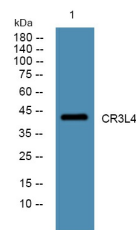
Product Type	Primary antibodies
Short Description	Rabbit polyclonal antibody anti-Cyclic Amp-Responsive Element-Binding Protein 3-Like Protein 4 (200-280) is suitable for use in Western Blot and ELISA research applications.
Applications	WB, ELISA
Host/Source	Rabbit
Reactivity	Human, Mouse, Rat

PRODUCT PROPERTIES

Clonality	Polyclonal
Clone ID	
Concentration	1 mg/mL
Conjugation	Unconjugated
Purification	The antibody was affinity-purified from rabbit anti-serum by affinity-chromatography.
Dilution	WB 1:500-2000
Range	ELISA 1:5000-20000
Formulation	PBS, 50% Glycerol and 0.02% Sodium Azide.
Isotype	IgG
Storage	Store at -20°C for up to 1 year from the date of receipt, and avoid repeat freeze-thaw cycles.
Instruction	

TARGET INFORMATION

Gene ID	148327
Gene Symbol	CREB3L4
Uniprot ID	CR3L4_HUMAN
Immunogen	Synthesized peptide derived from human protein at aa range 200-280
Immunogen Region	200-280
Specificity	CREB3L4 polyclonal antibody (Cyclic Amp-Responsive Element-Binding Protein 3-Like Protein 4) binds to endogenous Cyclic Amp-Responsive Element-Binding Protein 3-Like Protein 4 at the amino acid region 200-280.
Immunogen Sequence	



Western blot analysis of lysates from A431 cells, primary antibody was diluted at 1:1000, 4°C over night

This product is suitable for in-vitro studies under the RESEARCH USE ONLY [RUO] licence. This product must not be used as for diagnostic or other medical purposes.
St John's Laboratory Ltd, Knowledge Dock Business Centre, University Way, London, E16 2RD | Tel: 0208 223 3081