

## Anti-CDK3 antibody (10-90) (STJ190276)

STJ190276

### GENERAL INFORMATION

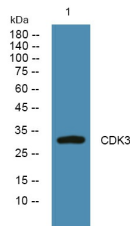
|                          |  |
|--------------------------|--|
| <b>Product Type</b>      | Primary antibodies   |
| <b>Short Description</b> | Rabbit polyclonal antibody anti-Cyclin-Dependent Kinase 3 (10-90) is suitable for use in Western Blot and ELISA research applications. |
| <b>Applications</b>      | WB, ELISA  |
| <b>Host/Source</b>       | Rabbit   |
| <b>Reactivity</b>        | Human, Mouse   |

### PRODUCT PROPERTIES

|                            |  |
|----------------------------|--|
| <b>Clonality</b>           | Polyclonal   |
| <b>Clone ID</b>            |  |
| <b>Concentration</b>       | 1 mg/mL  |
| <b>Conjugation</b>         | Unconjugated   |
| <b>Purification</b>        | The antibody was affinity-purified from rabbit anti-serum by affinity-chromatography.          |
| <b>Dilution Range</b>      | WB 1:500-2000<br>ELISA 1:5000-20000  |
| <b>Formulation</b>         | PBS, 50% Glycerol and 0.02% Sodium Azide.  |
| <b>Isotype</b>             | IgG  |
| <b>Storage Instruction</b> | Store at -20°C for up to 1 year from the date of receipt, and avoid repeat freeze-thaw cycles. |

### TARGET INFORMATION

|                           |  |
|---------------------------|--|
| <b>Gene ID</b>            | 1018   |
| <b>Gene Symbol</b>        | CDK3   |
| <b>Uniprot ID</b>         | CDK3_HUMAN   |
| <b>Immunogen</b>          | Synthesized peptide derived from human protein at aa range 10-90   |
| <b>Immunogen Region</b>   | 10-90  |
| <b>Specificity</b>        | CDK3 polyclonal antibody (Cyclin-Dependent Kinase 3) binds to endogenous Cyclin-Dependent Kinase 3 at the amino acid region 10-90. |
| <b>Immunogen Sequence</b> |  |



Western blot analysis of lysates from KB cells, primary antibody was diluted at 1:1000, 4°C over night