

Anti-MESP2 antibody (220-300) (STJ190209)

STJ190209

GENERAL INFORMATION

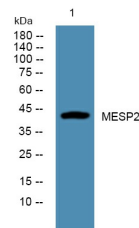
Product Type	Primary antibodies
Short Description	Rabbit polyclonal antibody anti-Mesoderm Posterior Protein 2 (220-300) is suitable for use in Western Blot and ELISA research applications.
Applications	WB, ELISA
Host/Source	Rabbit
Reactivity	Human, Rat, Mouse

PRODUCT PROPERTIES

Clonality	Polyclonal
Clone ID	
Concentration	1 mg/mL
Conjugation	Unconjugated
Purification	The antibody was affinity-purified from rabbit anti-serum by affinity-chromatography.
Dilution Range	WB 1:500-2000 ELISA 1:5000-20000
Formulation	PBS, 50% Glycerol and 0.02% Sodium Azide.
Isotype	IgG
Storage Instruction	Store at -20°C for up to 1 year from the date of receipt, and avoid repeat freeze-thaw cycles.

TARGET INFORMATION

Gene ID	145873
Gene Symbol	MESP2
Uniprot ID	MESP2_HUMAN
Immunogen	Synthesized peptide derived from human protein at aa range 220-300
Immunogen Region	220-300
Specificity	MESP2 polyclonal antibody (Mesoderm Posterior Protein 2) binds to endogenous Mesoderm Posterior Protein 2 at the amino acid region 220-300.
Immunogen Sequence	



Western blot analysis of lysates from A431 cells, primary antibody was diluted at 1:1000, 4°C over night