

Anti-ACIN1 antibody (1120-1200) (STJ190125)

STJ190125

GENERAL INFORMATION

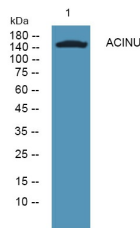
Product Type	Primary antibodies
Short Description	Rabbit polyclonal antibody anti-Apoptotic Chromatin Condensation Inducer In The Nucleus (1120-1200) is suitable for use in Western Blot and ELISA research applications.
Applications	WB, ELISA
Host/Source	Rabbit
Reactivity	Human, Mouse

PRODUCT PROPERTIES

Clonality	Polyclonal
Clone ID	
Concentration	1 mg/mL
Conjugation	Unconjugated
Purification	The antibody was affinity-purified from rabbit anti-serum by affinity-chromatography.
Dilution	WB 1:500-2000
Range	ELISA 1:5000-20000
Formulation	PBS, 50% Glycerol and 0.02% Sodium Azide.
Isotype	IgG
Storage Instruction	Store at -20°C for up to 1 year from the date of receipt, and avoid repeat freeze-thaw cycles.

TARGET INFORMATION

Gene ID	22985
Gene Symbol	ACIN1
Uniprot ID	ACINU_HUMAN
Immunogen	Synthesized peptide derived from human protein at aa range 1120-1200
Immunogen Region	1120-1200
Specificity	ACIN1 polyclonal antibody (Apoptotic Chromatin Condensation Inducer In The Nucleus) binds to endogenous Apoptotic Chromatin Condensation Inducer In The Nucleus at the amino acid region 1120-1200.
Immunogen Sequence	



Western blot analysis of lysates from SW480 cells, primary antibody was diluted at 1:1000, 4°C over night