

Anti-DYRK1A antibody (270-350) (STJ190109)

STJ190109

GENERAL INFORMATION

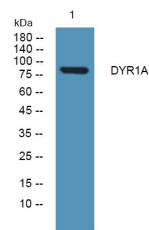
Product Type	Primary antibodies
Short Description	Rabbit polyclonal antibody anti-Dual Specificity Tyrosine-Phosphorylation-Regulated Kinase 1a (270-350) is suitable for use in Western Blot and ELISA research applications.
Applications	WB, ELISA
Host/Source	Rabbit
Reactivity	Human, Mouse, Rat

PRODUCT PROPERTIES

Clonality	Polyclonal
Clone ID	
Concentration	1 mg/mL
Conjugation	Unconjugated
Purification	The antibody was affinity-purified from rabbit anti-serum by affinity-chromatography.
Dilution	WB 1:500-2000
Range	ELISA 1:5000-20000
Formulation	PBS, 50% Glycerol and 0.02% Sodium Azide.
Isotype	IgG
Storage	Store at 20°C for up to 1 year from the date of receipt, and avoid repeat freeze-thaw cycles.
Instruction	

TARGET INFORMATION

Gene ID	1859
Gene Symbol	DYRK1A
Uniprot ID	DYR1A_HUMAN
Immunogen	Synthesized peptide derived from human protein at aa range 270-350
Immunogen Region	270-350
Specificity	DYRK1A polyclonal antibody (Dual Specificity Tyrosine-Phosphorylation-Regulated Kinase 1a) binds to endogenous Dual Specificity Tyrosine-Phosphorylation-Regulated Kinase 1a at the amino acid region 270-350.
Immunogen Sequence	



Western blot analysis of lysates from Jarkat cells, primary antibody was diluted at 1:1000, 4°C over night

This product is suitable for in-vitro studies under the RESEARCH USE ONLY [RUO] licence. This product must not be used as for diagnostic or other medical purposes.
St John's Laboratory Ltd, Knowledge Dock Business Centre, University Way, London, E16 2RD | Tel: 0208 223 3081