

Anti-MLH-1 antibody (Full length) [ZR347] (STJ180521)

STJ180521

GENERAL INFORMATION

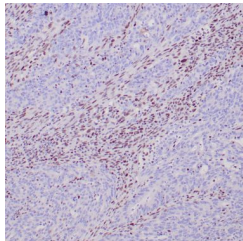
Product Type	Primary antibodies
Short Description	Rabbit monoclonal antibody anti-MLH-1 (Full length) is suitable for use in Immunohistochemistry research applications.
Applications	IHC-p
Host/Source	Rabbit
Reactivity	Human

PRODUCT PROPERTIES

Clonality	Monoclonal
Clone ID	ZR347
Concentration	
Conjugation	Unconjugated
Purification	Affinity purified
Dilution Range	
Formulation	Buffer with protein carrier and preservative
Isotype	IgG
Storage	Store at 2-8°C for up to 24 months. Predilute: Ready to use, no reconstitution necessary. Concentrate: Use dilution range and appropriate lab-standardized diluent. Stability after dilution: 7 days at 24°C, 3 months at 2-8°C, 6months at -20°C.
Instruction	

TARGET INFORMATION

Gene ID	4292
Gene Symbol	MLH1
Uniprot ID	MLH1_HUMAN
Immunogen	Full-length human MLH-1 protein
Immunogen Region	Full length
Specificity	Positive control: Colon carcinoma
Immunogen Sequence	



Human colon adenocarcinoma with Lynch syndrome stained with anti-MLH-1 antibody using peroxidase-conjugate and DAB chromogen. Note absence of nuclear staining of tumor cells whereas the background non tumor cells are positive.