

## Anti-Cyclin D1 antibody (200-295aa) [ZM178] (STJ180503)

STJ180503

### GENERAL INFORMATION

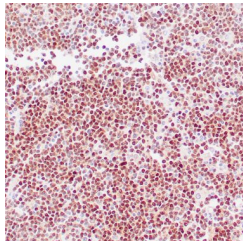
<b>Product Type</b>	Primary antibodies
<b>Short Description</b>	Mouse monoclonal antibody anti-Cyclin D1 (200-295aa) is suitable for use in Immunohistochemistry research applications.
<b>Applications</b>	IHC-p
<b>Host/Source</b>	Mouse
<b>Reactivity</b>	Human

### PRODUCT PROPERTIES

<b>Clonality</b>	Monoclonal
<b>Clone ID</b>	ZM178
<b>Concentration</b>	
<b>Conjugation</b>	Unconjugated
<b>Purification</b>	Affinity purified
<b>Dilution Range</b>	
<b>Formulation</b>	Buffer with protein carrier and preservative
<b>Isotype</b>	IgG2a/Kappa
<b>Storage</b>	Store at 2-8°C for up to 24 months. Predilute: Ready to use, no reconstitution necessary. Concentrate: Use dilution range and appropriate lab-standardized diluent. Stability after dilution: 7 days at 24°C, 3 months at 2-8°C, 6months at -20°C.
<b>Instruction</b>	

### TARGET INFORMATION

<b>Gene ID</b>	<a href="#">23582</a>
<b>Gene Symbol</b>	<a href="#">CCNDBP1</a>
<b>Uniprot ID</b>	<a href="#">CCDB1_HUMAN</a>
<b>Immunogen</b>	Synthetic peptide corresponding to residues within aa 200-295 of Cyclin D1
<b>Immunogen Region</b>	200-295aa
<b>Specificity</b>	Positive control: Mantle cell lymphoma
<b>Immunogen Sequence</b>	



Human mantle cell lymphoma stained with anti-Cyclin D1 antibody using peroxidase-conjugate and DAB chromogen. Note the nuclear staining of lymphoma cells.