

## Anti-LEF1 antibody (100-200aa) [ZR336] (STJ180463)

STJ180463

### GENERAL INFORMATION

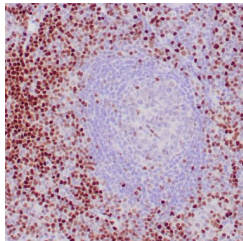
<b>Product Type</b>	Primary antibodies
<b>Short Description</b>	Rabbit monoclonal antibody anti-LEF1 (100-200aa) is suitable for use in Immunohistochemistry research applications.
<b>Applications</b>	IHC-p
<b>Host/Source</b>	Rabbit
<b>Reactivity</b>	Human

### PRODUCT PROPERTIES

<b>Clonality</b>	Monoclonal
<b>Clone ID</b>	ZR336
<b>Concentration</b>	
<b>Conjugation</b>	Unconjugated
<b>Purification</b>	Affinity purified
<b>Dilution Range</b>	
<b>Formulation</b>	Buffer with protein carrier and preservative
<b>Isotype</b>	IgG
<b>Storage Instruction</b>	Store at 2-8°C for up to 24 months. Predilute: Ready to use, no reconstitution necessary. Concentrate: Use dilution range and appropriate lab-standardized diluent. Stability after dilution: 7 days at 24°C, 3 months at 2-8°C, 6months at -20°C.

### TARGET INFORMATION

<b>Gene ID</b>	<a href="#">51176</a>
<b>Gene Symbol</b>	<a href="#">LEF1</a>
<b>Uniprot ID</b>	<a href="#">LEF1_HUMAN</a>
<b>Immunogen</b>	Fragment (around aa 100-200) of human LEF1 protein
<b>Immunogen Region</b>	100-200aa
<b>Specificity</b>	Positive control: CLL/SLL
<b>Immunogen Sequence</b>	



Human tonsil stained with anti-LEF1 using peroxidase conjugate and DAB chromogen. Note nuclear staining of subset of B cells.

This product is suitable for in-vitro studies under the RESEARCH USE ONLY [RUO] licence. This product must not be used as for diagnostic or other medical purposes.  
St John's Laboratory Ltd, Knowledge Dock Business Centre, University Way, London, E16 2RD | Tel: 0208 223 3081