

Anti-INI-1 antibody (Full length) [ZR282] (STJ180460)

STJ180460

GENERAL INFORMATION

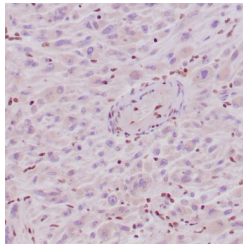
Product Type	Primary antibodies
Short Description	Rabbit monoclonal antibody anti-INI-1 (Full length) is suitable for use in Immunohistochemistry research applications.
Applications	IHC-p
Host/Source	Rabbit
Reactivity	Human

PRODUCT PROPERTIES

Clonality	Monoclonal
Clone ID	ZR282
Concentration	
Conjugation	Unconjugated
Purification	Affinity purified
Dilution Range	
Formulation	Buffer with protein carrier and preservative
Isotype	IgG
Storage Instruction	Store at 2-8°C for up to 24 months. Predilute: Ready to use, no reconstitution necessary. Concentrate: Use dilution range and appropriate lab-standardized diluent. Stability after dilution: 7 days at 24°C, 3 months at 2-8°C, 6months at -20°C.

TARGET INFORMATION

Gene ID	6598
Gene Symbol	SMARCB1
Uniprot ID	SNF5_HUMAN
Immunogen	Full-length human BAF47 protein
Immunogen Region	Full length
Specificity	Positive control: Epithelioid sarcoma
Immunogen Sequence	



Human epithelioid sarcoma stained with anti-INI-1 antibody using peroxidase-conjugate and DAB. Note the absence of nuclear staining of tumor cells, whereas the background cells are positive.