

## Anti-ER antibody (C-Term) [ZM319] (STJ180450)

STJ180450

### GENERAL INFORMATION

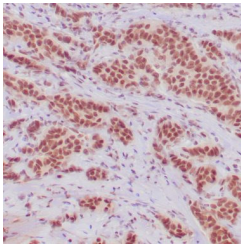
|                          |   |
|--------------------------|---|
| <b>Product Type</b>      | Primary antibodies  |
| <b>Short Description</b> | Mouse monoclonal antibody anti-ER (C-Term) is suitable for use in Immunohistochemistry research applications. |
| <b>Applications</b>      | IHC-p   |
| <b>Host/Source</b>       | Mouse   |
| <b>Reactivity</b>        | Human   |

### PRODUCT PROPERTIES

|                       |  |
|-----------------------|--|
| <b>Clonality</b>      | Monoclonal   |
| <b>Clone ID</b>       | ZM319  |
| <b>Concentration</b>  |  |
| <b>Conjugation</b>    | Unconjugated   |
| <b>Purification</b>   | Affinity purified  |
| <b>Dilution Range</b> |  |
| <b>Formulation</b>    | Buffer with protein carrier and preservative   |
| <b>Isotype</b>        | IgG1/K   |
| <b>Storage</b>        | Store at 2-8°C for up to 24 months. Predilute: Ready to use, no reconstitution necessary. Concentrate: Use dilution range and appropriate lab-standardized diluent. Stability after dilution: 7 days at 24°C, 3 months at 2-8°C, 6months at -20°C. |
| <b>Instruction</b>    |  |

### TARGET INFORMATION

|                           |  |
|---------------------------|--|
| <b>Gene ID</b>            | <a href="#">2099</a>   |
| <b>Gene Symbol</b>        | <a href="#">ESR1</a>   |
| <b>Uniprot ID</b>         | <a href="#">ESR1_HUMAN</a>   |
| <b>Immunogen</b>          | Synthetic peptide corresponding to residues on the C-terminus of human E |
| <b>Immunogen Region</b>   | C-Term   |
| <b>Specificity</b>        | Positive control: Breast carcinoma                                       |
| <b>Immunogen Sequence</b> |  |



Human breast adenocarcinoma stained with anti-ER antibody using peroxidase-conjugate and DAB chromogen. Note the strong nuclear staining of tumor cells.