

Anti-BCL-6 antibody (256-389aa) [ZR280] (STJ180432)

STJ180432

GENERAL INFORMATION

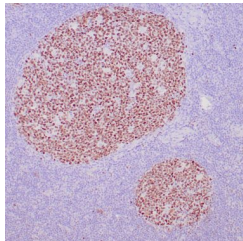
Product Type	Primary antibodies
Short Description	Rabbit monoclonal antibody anti-BCL-6 (256-389aa) is suitable for use in Immunohistochemistry research applications.
Applications	IHC-p
Host/Source	Rabbit
Reactivity	Human

PRODUCT PROPERTIES

Clonality	Monoclonal
Clone ID	ZR280
Concentration	
Conjugation	Unconjugated
Purification	Affinity purified
Dilution Range	
Formulation	Buffer with protein carrier and preservative
Isotype	IgG
Storage	Store at 2-8°C for up to 24 months. Predilute: Ready to use, no reconstitution necessary. Concentrate: Use dilution range and appropriate lab-standardized diluent. Stability after dilution: 7 days at 24°C, 3 months at 2-8°C, 6months at -20°C.
Instruction	

TARGET INFORMATION

Gene ID	604
Gene Symbol	BCL6
Uniprot ID	BCL6_HUMAN
Immunogen	Human BCL-6 protein fragment (aa256-389)
Immunogen Region	256-389aa
Specificity	Positive control: Tonsil or diffuse large B-cell lymphoma
Immunogen Sequence	



Human reactive lymph node stained with anti-BCL-6 antibody using peroxidase-conjugate and DAB chromogen. Note nuclear staining of follicular center B-cells.

This product is suitable for in-vitro studies under the RESEARCH USE ONLY [RUO] licence. This product must not be used as for diagnostic or other medical purposes.
St John's Laboratory Ltd, Knowledge Dock Business Centre, University Way, London, E16 2RD | Tel: 0208 223 3081