

Anti-GLUT1 antibody (Full length) [ZM137] (STJ180417)

STJ180417

GENERAL INFORMATION

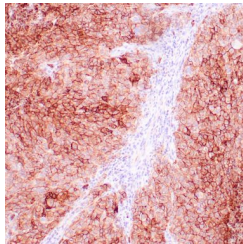
Product Type	Primary antibodies
Short Description	Mouse monoclonal antibody anti-GLUT1 (Full length) is suitable for use in Immunohistochemistry research applications.
Applications	IHC-p
Host/Source	Mouse
Reactivity	Human

PRODUCT PROPERTIES

Clonality	Monoclonal
Clone ID	ZM137
Concentration	
Conjugation	Unconjugated
Purification	Affinity purified
Dilution Range	1:100-200
Formulation	Buffer with protein carrier and preservative
Isotype	IgG2a/Kappa
Storage	Store at 2-8°C for up to 24 months. Predilute: Ready to use, no reconstitution necessary. Concentrate: Use dilution range and appropriate lab-standardized diluent. Stability after dilution: 7 days at 24°C, 3 months at 2-8°C, 6months at -20°C.
Instruction	

TARGET INFORMATION

Gene ID	6513
Gene Symbol	SLC2A1
Uniprot ID	GTR1_HUMAN
Immunogen	Recombinant full-length human GLUT-1 protein
Immunogen Region	Full length
Specificity	Positive control: Adenocarcinoma
Immunogen Sequence	



Human breast carcinoma stained with anti-Glut-1 using peroxidase-conjugate and DAB chromogen. Note membranous staining of tumor cells.