

Anti-EP-CAM/ESA antibody (Full length) [ZR307] (STJ180415)

STJ180415

GENERAL INFORMATION

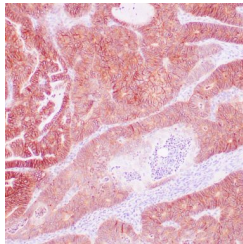
Product Type	Primary antibodies
Short Description	Rabbit monoclonal antibody anti-EP-CAM/ESA (Full length) is suitable for use in Immunohistochemistry research applications.
Applications	IHC-p
Host/Source	Rabbit
Reactivity	Human

PRODUCT PROPERTIES

Clonality	Monoclonal
Clone ID	ZR307
Concentration	
Conjugation	Unconjugated
Purification	Affinity purified
Dilution Range	1:100-200
Formulation	Buffer with protein carrier and preservative
Isotype	IgG
Storage Instruction	Store at 2-8°C for up to 24 months. Predilute: Ready to use, no reconstitution necessary. Concentrate: Use dilution range and appropriate lab-standardized diluent. Stability after dilution: 7 days at 24°C, 3 months at 2-8°C, 6months at -20°C.

TARGET INFORMATION

Gene ID	4072
Gene Symbol	EPCAM
Uniprot ID	EPCAM_HUMAN
Immunogen	Recombinant full-length human EP-CAM protein
Immunogen Region	Full length
Specificity	Positive control: Colon carcinoma
Immunogen Sequence	



Human colon adenocarcinoma stained with EP-CAM antibody using peroxidase-conjugate and DAB chromogen. Note the membranous staining of tumor cells.