

Anti-Synaptophysin antibody (200-300aa) [ZM208] (STJ180393)

STJ180393

GENERAL INFORMATION

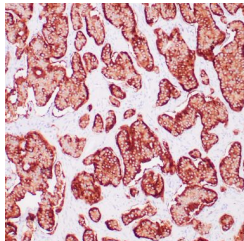
Product Type	Primary antibodies
Short Description	Mouse monoclonal antibody anti-Synaptophysin (200-300aa) is suitable for use in Immunohistochemistry research applications.
Applications	IHC-p
Host/Source	Mouse
Reactivity	Human

PRODUCT PROPERTIES

Clonality	Monoclonal
Clone ID	ZM208
Concentration	
Conjugation	Unconjugated
Purification	Affinity purified
Dilution Range	1:100
Formulation	Buffer with protein carrier and preservative
Isotype	IgG1/Kappa
Storage	Store at 2-8°C for up to 24 months. Predilute: Ready to use, no reconstitution necessary. Concentrate: Use dilution range and appropriate lab-standardized diluent. Stability after dilution: 7 days at 24°C, 3 months at 2-8°C, 6months at -20°C.
Instruction	

TARGET INFORMATION

Gene ID	6855
Gene Symbol	SYP
Uniprot ID	SYPH_HUMAN
Immunogen	Synthetic peptide within Human Synaptophysin aa 200-300
Immunogen Region	200-300aa
Specificity	Positive control: Pancreas
Immunogen Sequence	



Human neuroendocrine tumor stained with anti-Synaptophysin antibody using peroxidase-conjugate and DAB chromogen. Note the cytoplasmic staining of tumor cells.