

Anti-Prolactin antibody (63-201aa) [ZM203] (STJ180385)

STJ180385

GENERAL INFORMATION

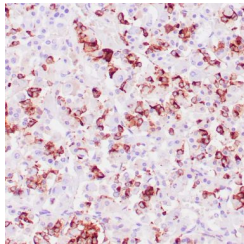
| | |
|--------------------------|--|
| Product Type | Primary antibodies |
| Short Description | Mouse monoclonal antibody anti-Prolactin (63-201aa) is suitable for use in Immunohistochemistry research applications. |
| Applications | IHC-p |
| Host/Source | Mouse |
| Reactivity | Human |

PRODUCT PROPERTIES

| | |
|-----------------------|--|
| Clonality | Monoclonal |
| Clone ID | ZM203 |
| Concentration | |
| Conjugation | Unconjugated |
| Purification | Affinity purified |
| Dilution Range | 1:100-200 |
| Formulation | Buffer with protein carrier and preservative |
| Isotype | IgG1/Kappa |
| Storage | Store at 2-8°C for up to 24 months. Predilute: Ready to use, no reconstitution necessary. Concentrate: Use dilution range and appropriate lab-standardized diluent. Stability after dilution: 7 days at 24°C, 3 months at 2-8°C, 6months at -20°C. |
| Instruction | |

TARGET INFORMATION

| | |
|---------------------------|--|
| Gene ID | 5617 |
| Gene Symbol | PRL |
| Uniprot ID | PRL_HUMAN |
| Immunogen | Recombinant fragment of human Prolactin (PRL) protein (around aa 63-201) |
| Immunogen Region | 63-201aa |
| Specificity | Positive control: Pituitary gland |
| Immunogen Sequence | |



Human pituitary gland stained with anti-Prolactin antibody using peroxidase-conjugate and DAB chromogen. Note cytoplasmic staining of some glandular cells.