

## Anti-Glypican-3 antibody [ZM138] (STJ180354)

STJ180354

### GENERAL INFORMATION

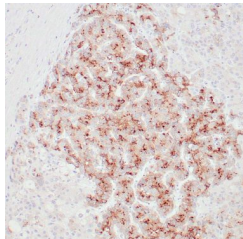
|                          |  |
|--------------------------|--|
| <b>Product Type</b>      | Primary antibodies   |
| <b>Short Description</b> | Mouse monoclonal antibody anti-Glypican-3 is suitable for use in Immunohistochemistry research applications. |
| <b>Applications</b>      | IHC-p  |
| <b>Host/Source</b>       | Mouse  |
| <b>Reactivity</b>        | Human  |

### PRODUCT PROPERTIES

|                            |  |
|----------------------------|--|
| <b>Clonality</b>           | Monoclonal   |
| <b>Clone ID</b>            | ZM138  |
| <b>Concentration</b>       |  |
| <b>Conjugation</b>         | Unconjugated   |
| <b>Purification</b>        | Affinity purified  |
| <b>Dilution Range</b>      | 1:100-200  |
| <b>Formulation</b>         | Buffer with protein carrier and preservative   |
| <b>Isotype</b>             | IgG1/Kappa   |
| <b>Storage Instruction</b> | Store at 2-8°C for up to 24 months. Predilute: Ready to use, no reconstitution necessary. Concentrate: Use dilution range and appropriate lab-standardized diluent. Stability after dilution: 7 days at 24°C, 3 months at 2-8°C, 6months at -20°C. |

### TARGET INFORMATION

|                           |  |
|---------------------------|--|
| <b>Gene ID</b>            | <a href="#">2719</a>                       |
| <b>Gene Symbol</b>        | <a href="#">GPC3</a>                       |
| <b>Uniprot ID</b>         | <a href="#">GPC3_HUMAN</a>                 |
| <b>Immunogen</b>          | Recombinant human GPC3 protein fragment    |
| <b>Immunogen Region</b>   |  |
| <b>Specificity</b>        | Positive control: Hepatocellular carcinoma |
| <b>Immunogen Sequence</b> |  |



Human hepatocellular carcinoma stained with anti-GPC3 antibody using peroxidase-conjugate and DAB chromogen. Note membranous and granular cytoplasmic staining of tumor cells.