

## Anti-Podoplanin antibody (24-126aa) [ZM31] (STJ180283)

STJ180283

### GENERAL INFORMATION

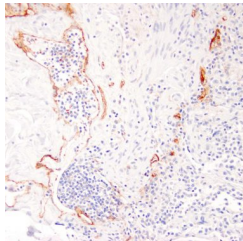
<b>Product Type</b>	Primary antibodies
<b>Short Description</b>	Mouse monoclonal antibody anti-Podoplanin (24-126aa) is suitable for use in Immunohistochemistry research applications.
<b>Applications</b>	IHC-p
<b>Host/Source</b>	Mouse
<b>Reactivity</b>	Human

### PRODUCT PROPERTIES

<b>Clonality</b>	Monoclonal
<b>Clone ID</b>	ZM31
<b>Concentration</b>	
<b>Conjugation</b>	Unconjugated
<b>Purification</b>	Affinity purified
<b>Dilution Range</b>	1:100-200
<b>Formulation</b>	Buffer with protein carrier and preservative
<b>Isotype</b>	IgG1/Kappa
<b>Storage Instruction</b>	Store at 2-8°C for up to 24 months. Predilute: Ready to use, no reconstitution necessary. Concentrate: Use dilution range and appropriate lab-standardized diluent. Stability after dilution: 7 days at 24°C, 3 months at 2-8°C, 6months at -20°C.

### TARGET INFORMATION

<b>Gene ID</b>	<a href="#">10630</a>
<b>Gene Symbol</b>	<a href="#">PDPN</a>
<b>Uniprot ID</b>	<a href="#">PDPN_HUMAN</a>
<b>Immunogen</b>	Recombinant human Podoplanin (PDPN) protein fragment (around aa 24-126)
<b>Immunogen Region</b>	24-126aa
<b>Specificity</b>	Positive control: Mesothelioma
<b>Immunogen Sequence</b>	



Human lymph node stained with anti-podoplanin antibody using peroxidase-conjugate and DAB chromogen. Note cytoplasmic staining of lymphatic endothelial cells.