

Anti-WT1 antibody [6F-H2] (STJ180267)

STJ180267

GENERAL INFORMATION

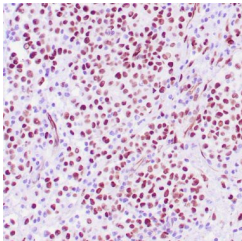
Product Type	Primary antibodies
Short Description	Mouse monoclonal antibody anti-WT1 is suitable for use in Immunohistochemistry research applications.
Applications	IHC-p
Host/Source	Mouse
Reactivity	Human

PRODUCT PROPERTIES

Clonality	Monoclonal
Clone ID	6F-H2
Concentration	
Conjugation	Unconjugated
Purification	Affinity purified
Dilution Range	1:100-200
Formulation	Buffer with protein carrier and preservative
Isotype	IgG1/Kappa
Storage Instruction	Store at 2-8°C for up to 24 months. Predilute: Ready to use, no reconstitution necessary. Concentrate: Use dilution range and appropriate lab-standardized diluent. Stability after dilution: 7 days at 24°C, 3 months at 2-8°C, 6months at -20°C.

TARGET INFORMATION

Gene ID	7490
Gene Symbol	WT1
Uniprot ID	WT1_HUMAN
Immunogen	Purified WT protein
Immunogen Region	
Specificity	Positive control: Malignant mesothelioma
Immunogen Sequence	



Human ovarian adenocarcinoma stained with anti-WT1 antibody using peroxidase-conjugate and DAB chromogen. Note the nuclear staining of tumor cells.