

Anti-MLH1 antibody (Full length) [G168-728] (STJ180174)

STJ180174

GENERAL INFORMATION

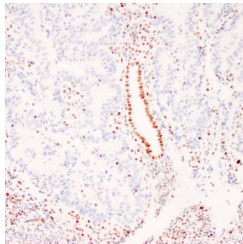
| | |
|--------------------------|--|
| Product Type | Primary antibodies |
| Short Description | Mouse monoclonal antibody anti-MLH1 (Full length) is suitable for use in Immunohistochemistry research applications. |
| Applications | IHC-p |
| Host/Source | Mouse |
| Reactivity | Human |

PRODUCT PROPERTIES

| | |
|----------------------------|--|
| Clonality | Monoclonal |
| Clone ID | G168-728 |
| Concentration | |
| Conjugation | Unconjugated |
| Purification | Affinity purified |
| Dilution Range | 1:25-100 |
| Formulation | Buffer with protein carrier and preservative |
| Isotype | IgG1/Kappa |
| Storage Instruction | Store at 2-8°C for up to 24 months. Predilute: Ready to use, no reconstitution necessary. Concentrate: Use dilution range and appropriate lab-standardized diluent. Stability after dilution: 7 days at 24°C, 3 months at 2-8°C, 6months at -20°C. |

TARGET INFORMATION

| | |
|---------------------------|-----------------------------------|
| Gene ID | 4292 |
| Gene Symbol | MLH1 |
| Uniprot ID | MLH1_HUMAN |
| Immunogen | Full length recombinant MLH-1 |
| Immunogen Region | Full length |
| Specificity | Positive control: Colon carcinoma |
| Immunogen Sequence | |



Human colon adenocarcinoma with Lynch syndrome stained with anti-MLH1 antibody using peroxidase-conjugate and DAB chromogen. Note absence of nuclear staining of tumor cells whereas the background non tumor cells are positive.