

Anti-Mesothelial cell antibody [HBME-1] (STJ180170)

STJ180170

GENERAL INFORMATION

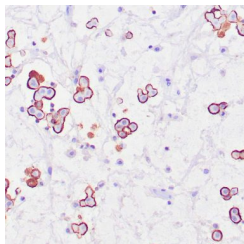
Product Type	Primary antibodies
Short Description	Mouse monoclonal antibody anti-Mesothelial cell is suitable for use in Immunohistochemistry research applications.
Applications	IHC-p
Host/Source	Mouse
Reactivity	Human

PRODUCT PROPERTIES

Clonality	Monoclonal
Clone ID	HBME-1
Concentration	
Conjugation	Unconjugated
Purification	Affinity purified
Dilution Range	1:25-100
Formulation	Buffer with protein carrier and preservative
Isotype	IgG1/Kappa
Storage Instruction	Store at 2-8°C for up to 24 months. Predilute: Ready to use, no reconstitution necessary. Concentrate: Use dilution range and appropriate lab-standardized diluent. Stability after dilution: 7 days at 24°C, 3 months at 2-8°C, 6months at -20°C.

TARGET INFORMATION

Gene ID	
Gene Symbol	
Uniprot ID	
Immunogen	A suspension of mesothelioma cells of human origin
Region	
Specificity	Positive control: Mesothelioma
Immunogen Sequence	



Human mesothelioma stained with anti-HBME1 antibody using peroxidase-conjugate and DAB chromogen. Note membranous staining of tumor cells.