

## Anti-SMARCB1 antibody (257-359aa) [25] (STJ180136)

STJ180136

### GENERAL INFORMATION

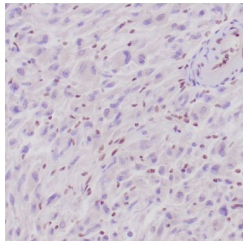
<b>Product Type</b>	Primary antibodies
<b>Short Description</b>	Mouse monoclonal antibody anti-SMARCB1 (257-359aa) is suitable for use in Immunohistochemistry research applications.
<b>Applications</b>	IHC-p
<b>Host/Source</b>	Mouse
<b>Reactivity</b>	Human

### PRODUCT PROPERTIES

<b>Clonality</b>	Monoclonal
<b>Clone ID</b>	25
<b>Concentration</b>	
<b>Conjugation</b>	Unconjugated
<b>Purification</b>	Affinity purified
<b>Dilution Range</b>	1:50-100
<b>Formulation</b>	Buffer with protein carrier and preservative
<b>Isotype</b>	IgG2a/Kappa
<b>Storage Instruction</b>	Store at 2-8°C for up to 24 months. Predilute: Ready to use, no reconstitution necessary. Concentrate: Use dilution range and appropriate lab-standardized diluent. Stability after dilution: 7 days at 24°C, 3 months at 2-8°C, 6months at -20°C.

### TARGET INFORMATION

<b>Gene ID</b>	6598
<b>Gene Symbol</b>	SMARCB1
<b>Uniprot ID</b>	SNF5_HUMAN
<b>Immunogen</b>	Mouse BAF47 aa 257-359
<b>Immunogen Region</b>	257-359aa
<b>Specificity</b>	Positive control: Brain or astrocytoma
<b>Immunogen Sequence</b>	



Human epithelioid sarcoma stained with anti-INI-1 antibody using peroxidase-conjugate and DAB. Note the absence of nuclear staining of stromal/endothelial cells and absence of staining in tumor cells, whereas the background cells with nuclear staining.