

Anti-INHA antibody (1-32aa) [R1] (STJ180135)

STJ180135

GENERAL INFORMATION

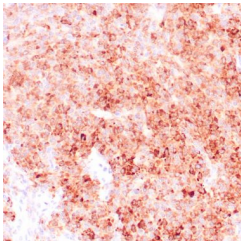
Product Type	Primary antibodies
Short Description	Mouse monoclonal antibody anti-INHA (1-32aa) is suitable for use in Immunohistochemistry research applications.
Applications	IHC-p
Host/Source	Mouse
Reactivity	Human

PRODUCT PROPERTIES

Clonality	Monoclonal
Clone ID	R1
Concentration	
Conjugation	Unconjugated
Purification	Affinity purified
Dilution Range	1:10-100
Formulation	Buffer with protein carrier and preservative
Isotype	IgG2a/Kappa
Storage Instruction	Store at 2-8°C for up to 24 months. Predilute: Ready to use, no reconstitution necessary. Concentrate: Use dilution range and appropriate lab-standardized diluent. Stability after dilution: 7 days at 24°C, 3 months at 2-8°C, 6months at -20°C.

TARGET INFORMATION

Gene ID	3623
Gene Symbol	INHA
Uniprot ID	INHA_HUMAN
Immunogen	A synthetic peptide corresponding to aa1-32 of human inhibin alpha subunit
Immunogen Region	1-32aa
Specificity	Positive control: Adrenal cortex
Immunogen Sequence	



Human granulosa cell tumor stained with anti-Inhibin antibody using peroxidase-conjugate and DAB chromogen. Note the cytoplasmic staining of tumor cells.