

Anti-IGF2BP3 antibody [EP286] (STJ180134)

STJ180134

GENERAL INFORMATION

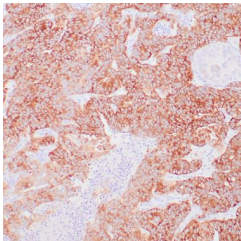
Product Type	Primary antibodies
Short Description	Rabbit monoclonal antibody anti-IGF2BP3 is suitable for use in Immunohistochemistry research applications.
Applications	IHC-p
Host/Source	Rabbit
Reactivity	Human

PRODUCT PROPERTIES

Clonality	Monoclonal
Clone ID	EP286
Concentration	
Conjugation	Unconjugated
Purification	Affinity purified
Dilution Range	1:50-100
Formulation	Buffer with protein carrier and preservative
Isotype	IgG
Storage Instruction	Store at 2-8°C for up to 24 months. Predilute: Ready to use, no reconstitution necessary. Concentrate: Use dilution range and appropriate lab-standardized diluent. Stability after dilution: 7 days at 24°C, 3 months at 2-8°C, 6months at -20°C.

TARGET INFORMATION

Gene ID	84888
Gene Symbol	SPPL2A
Uniprot ID	SPP2A_HUMAN
Immunogen	Recombinant fragment within Human IMP3
Region	
Specificity	Positive control: Pancreatic ductal adenocarcinoma
Immunogen Sequence	



Human pancreatic ductal adenocarcinoma stained with anti-IMP3 antibody using peroxidase-conjugate and DAB chromogen. Note cytoplasmic staining of tumor cells.