

Anti-ERBB2 antibody (ECD) [ZR5] (STJ180123)

STJ180123

GENERAL INFORMATION

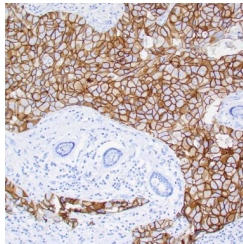
Product Type	Primary antibodies
Short Description	Rabbit monoclonal antibody anti-ERBB2 (ECD) is suitable for use in Immunohistochemistry research applications.
Applications	IHC-p
Host/Source	Rabbit
Reactivity	Human

PRODUCT PROPERTIES

Clonality	Monoclonal
Clone ID	ZR5
Concentration	
Conjugation	Unconjugated
Purification	Affinity purified
Dilution Range	1:200-300
Formulation	Buffer with protein carrier and preservative
Isotype	IgG
Storage Instruction	Store at 2-8°C for up to 24 months. Predilute: Ready to use, no reconstitution necessary. Concentrate: Use dilution range and appropriate lab-standardized diluent. Stability after dilution: 7 days at 24°C, 3 months at 2-8°C, 6months at -20°C.

TARGET INFORMATION

Gene ID	2064
Gene Symbol	ERBB2
Uniprot ID	ERBB2_HUMAN
Immunogen	Recombinant protein encoding extracellular domain of human c-erbB2
Immunogen Region	ECD
Specificity	Positive control: Breast carcinomas
Immunogen Sequence	



Human breast infiltrating ductal carcinoma stained with anti-Her-2/neu antibody using peroxidase-conjugate and DAB chromogen. Note the strong membrane staining (3+) of carcinoma cells.

This product is suitable for in-vitro studies under the RESEARCH USE ONLY [RUO] licence. This product must not be used as for diagnostic or other medical purposes.
St John's Laboratory Ltd, Knowledge Dock Business Centre, University Way, London, E16 2RD | Tel: 0208 223 3081