

Anti-EGFR antibody (Around Tyr1068) [EP22] (STJ180089)

STJ180089

GENERAL INFORMATION

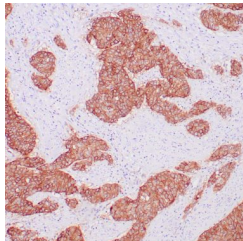
Product Type	Primary antibodies
Short Description	Rabbit monoclonal antibody anti-EGFR (Around Tyr1068) is suitable for use in Immunohistochemistry research applications.
Applications	IHC-p
Host/Source	Rabbit
Reactivity	Human

PRODUCT PROPERTIES

Clonality	Monoclonal
Clone ID	EP22
Concentration	
Conjugation	Unconjugated
Purification	Affinity purified
Dilution Range	1:50-100
Formulation	Buffer with protein carrier and preservative
Isotype	IgG
Storage Instruction	Store at 2-8°C for up to 24 months. Predilute: Ready to use, no reconstitution necessary. Concentrate: Use dilution range and appropriate lab-standardized diluent. Stability after dilution: 7 days at 24°C, 3 months at 2-8°C, 6months at -20°C.

TARGET INFORMATION

Gene ID	1956
Gene Symbol	EGFR
Uniprot ID	EGFR_HUMAN
Immunogen	A synthetic phospho-peptide corresponding to residues surrounding Tyr1068 of human EGF receptor
Immunogen Region	Around Tyr1068
Specificity	Positive control: Lung adenocarcinoma
Immunogen Sequence	



Human lung adenocarcinoma stained with anti-EGFR antibody using peroxidase-conjugate and DAB chromogen. Note the membrane staining of carcinoma cells.