

## Anti-EBV-LMP antibody [CS1-4] (STJ180088)

STJ180088

### GENERAL INFORMATION

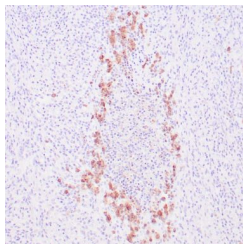
<b>Product Type</b>	Primary antibodies
<b>Short Description</b>	Mouse monoclonal antibody anti-EBV-LMP is suitable for use in Immunohistochemistry research applications.
<b>Applications</b>	IHC-p
<b>Host/Source</b>	Mouse
<b>Reactivity</b>	EBV

### PRODUCT PROPERTIES

<b>Clonality</b>	Monoclonal
<b>Clone ID</b>	CS1-4
<b>Concentration</b>	
<b>Conjugation</b>	Unconjugated
<b>Purification</b>	Affinity purified
<b>Dilution Range</b>	1:100-200
<b>Formulation</b>	Buffer with protein carrier and preservative
<b>Isotype</b>	IgG1/Kappa
<b>Storage Instruction</b>	Store at 2-8°C for up to 24 months. Predilute: Ready to use, no reconstitution necessary. Concentrate: Use dilution range and appropriate lab-standardized diluent. Stability after dilution: 7 days at 24°C, 3 months at 2-8°C, 6months at -20°C.

### TARGET INFORMATION

<b>Gene ID</b>	
<b>Gene Symbol</b>	
<b>Uniprot ID</b>	
<b>Immunogen</b>	Recombinant fusion protein containing the sequence of bacterial beta-galactosidase and the carboxyl half of EBV-encoded LMP
<b>Region</b>	
<b>Specificity</b>	Positive control: EBV positive cells
<b>Immunogen Sequence</b>	



Human Hodgkin's lymphoma stained with anti-EBV-LMP antibody using peroxidase-conjugate and DAB chromogen. Note intense cytoplasmic staining of Reed-Sternberg cells.

---

This product is suitable for in-vitro studies under the RESEARCH USE ONLY [RUO] licence. This product must not be used as for diagnostic or other medical purposes.  
St John's Laboratory Ltd, Knowledge Dock Business Centre, University Way, London, E16 2RD | Tel: 0208 223 3081