

Anti-DOG1 antibody [DOG1.1] (STJ180085)

STJ180085

GENERAL INFORMATION

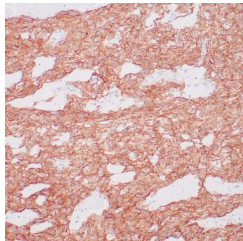
Product Type	Primary antibodies
Short Description	Mouse monoclonal antibody anti-DOG1 is suitable for use in Immunohistochemistry research applications.
Applications	IHC-p
Host/Source	Mouse
Reactivity	Human

PRODUCT PROPERTIES

Clonality	Monoclonal
Clone ID	DOG1.1
Concentration	
Conjugation	Unconjugated
Purification	Affinity purified
Dilution Range	1:100
Formulation	Buffer with protein carrier and preservative
Isotype	IgG1/Kappa
Storage	Store at 2-8°C for up to 24 months. Predilute: Ready to use, no reconstitution necessary. Concentrate: Use dilution range and appropriate lab-standardized diluent. Stability after dilution: 7 days at 24°C, 3 months at 2-8°C, 6months at -20°C.
Instruction	

TARGET INFORMATION

Gene ID	55107
Gene Symbol	ANO1
Uniprot ID	ANO1_HUMAN
Immunogen	Synthetic peptides FLJ34272 specific to human gastrointestinal stromal tumor (GIST)
Immunogen Region	
Specificity	Positive control: Breast carcinomas
Immunogen Sequence	



GIST stained with DOG-1 antibody using peroxidase-conjugate and DAB chromogen. Note the strong cytoplasmic staining of tumor cells.