

Anti-CD68 antibody [KP1] (STJ180068)

STJ180068

GENERAL INFORMATION

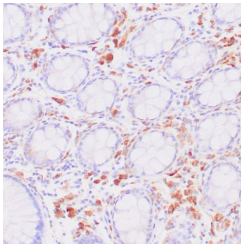
Product Type	Primary antibodies
Short Description	Mouse monoclonal antibody anti-CD68 is suitable for use in Immunohistochemistry research applications.
Applications	IHC-p
Host/Source	Mouse
Reactivity	Human

PRODUCT PROPERTIES

Clonality	Monoclonal
Clone ID	KP1
Concentration	
Conjugation	Unconjugated
Purification	Affinity purified
Dilution Range	1:100-200
Formulation	Buffer with protein carrier and preservative
Isotype	IgG1/Kappa
Storage Instruction	Store at 2-8°C for up to 24 months. Predilute: Ready to use, no reconstitution necessary. Concentrate: Use dilution range and appropriate lab-standardized diluent. Stability after dilution: 7 days at 24°C, 3 months at 2-8°C, 6months at -20°C.

TARGET INFORMATION

Gene ID	968
Gene Symbol	CD68
Uniprot ID	CD68_HUMAN
Immunogen	Subcellular fraction of human alveolar macrophages
Region	
Specificity	Positive control: Tonsil, lymph node, spleen
Immunogen Sequence	



Human colon stained with anti-CD68 antibody using peroxidase conjugate and DAB chromogen. Note intense cytoplasmic staining of glandular cells.