

Anti-Retinoblastoma Gene Protein antibody (STJ16101790)

STJ16101790

GENERAL INFORMATION

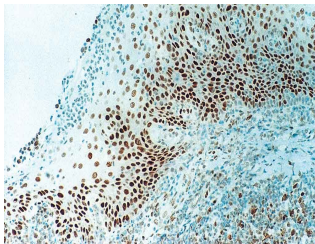
Product Type	Primary antibodies
Short Description	Mouse monoclonal antibody anti-Retinoblastoma Gene Protein is suitable for use in Immunohistochemistry and Western Blot research applications.
Applications	IHC-P, IHC-F, WB
Host/Source	Mouse
Reactivity	Human

PRODUCT PROPERTIES

Clonality	Monoclonal
Clone ID	
Concentration	
Conjugation	Unconjugated
Purification	
Dilution Range	IHC-P (1:25-1:50) IHC-F WB (1:250)
Formulation	Tissue culture supernatant with 15mM sodium azide
Isotype	IgG1
Storage	Store at 2-8°C upon receipt.
Instruction	

TARGET INFORMATION

Gene ID
Gene Symbol
Uniprot ID
Immunogen
Immunogen
Region
Specificity
Immunogen
Sequence



This product is suitable for in-vitro studies under the RESEARCH USE ONLY [RUO] licence. This product must not be used as for diagnostic or other medical purposes.
St John's Laboratory Ltd, Knowledge Dock Business Centre, University Way, London, E16 2RD | Tel: 0208 223 3081