

## Anti-MSH6 antibody (STJ16101771)

STJ16101771

### GENERAL INFORMATION

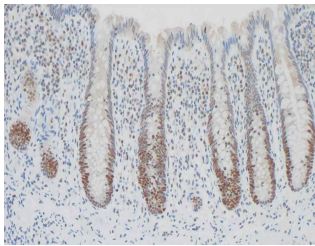
<b>Product Type</b>	Primary antibodies
<b>Short Description</b>	Mouse monoclonal antibody anti-Mismatch Repair Protein 6 (MSH6) is suitable for use in Immunohistochemistry research applications.
<b>Applications</b>	IHC-P
<b>Host/Source</b>	Mouse
<b>Reactivity</b>	Human

### PRODUCT PROPERTIES

<b>Clonality</b>	Monoclonal
<b>Clone ID</b>	
<b>Concentration</b>	
<b>Conjugation</b>	Unconjugated
<b>Purification</b>	
<b>Dilution Range</b>	IHC-P (1:100)
<b>Formulation</b>	Tissue culture supernatant with 15mM sodium azide
<b>Isotype</b>	IgG
<b>Storage Instruction</b>	Store at 2-8°C upon receipt.

### TARGET INFORMATION

<b>Gene ID</b>
<b>Gene Symbol</b>
<b>Uniprot ID</b>
<b>Immunogen</b>
<b>Immunogen Region</b>
<b>Specificity</b>
<b>Immunogen Sequence</b>



---

This product is suitable for in-vitro studies under the RESEARCH USE ONLY [RUO] licence. This product must not be used as for diagnostic or other medical purposes.  
St John's Laboratory Ltd, Knowledge Dock Business Centre, University Way, London, E16 2RD | Tel: 0208 223 3081