

## Anti-GCDFP-15 + Mammaglobin Cocktail antibody (STJ16101536)

STJ16101536

### GENERAL INFORMATION

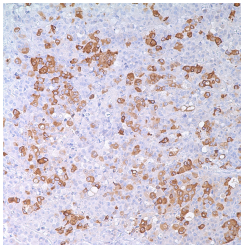
<b>Product Type</b>	Primary antibodies
<b>Short Description</b>	Rabbit, Mouse monoclonal antibody anti-GCDFP-15 + Mammaglobin Cocktail is suitable for use in Immunohistochemistry research applications.
<b>Applications</b>	IHC-P
<b>Host/Source</b>	Rabbit, Mouse
<b>Reactivity</b>	Human

### PRODUCT PROPERTIES

<b>Clonality</b>	Monoclonal
<b>Clone ID</b>	
<b>Concentration</b>	
<b>Conjugation</b>	Unconjugated
<b>Purification</b>	
<b>Dilution Range</b>	
<b>Formulation</b>	Tris Buffer, pH 7.3-7.7, containing 1% BSA and <0.1% Sodium Azide
<b>Isotype</b>	IgG2a/IgG1/IgG
<b>Storage Instruction</b>	Store at 2-8°C upon receipt.

### TARGET INFORMATION

**Gene ID**  
**Gene Symbol**  
**Uniprot ID**  
**Immunogen**  
**Immunogen**  
**Region**  
**Specificity**  
**Immunogen**  
**Sequence**



---

This product is suitable for in-vitro studies under the RESEARCH USE ONLY [RUO] licence. This product must not be used as for diagnostic or other medical purposes.  
St John's Laboratory Ltd, Knowledge Dock Business Centre, University Way, London, E16 2RD | Tel: 0208 223 3081