

**Anti-HLA-ABCE antibody {PE} (STJ16101395)**  
STJ16101395

**GENERAL INFORMATION**

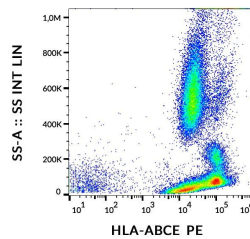
|                          |  |
|--------------------------|--|
| <b>Product Type</b>      | Primary antibodies   |
| <b>Short Description</b> | Mouse monoclonal antibody anti-HLA-ABCE is suitable for use in Flow Cytometry research applications. |
| <b>Applications</b>      | FC   |
| <b>Host/Source</b>       | Mouse  |
| <b>Reactivity</b>        | Human  |

**PRODUCT PROPERTIES**

|                            |  |
|----------------------------|--|
| <b>Clonality</b>           | Monoclonal   |
| <b>Clone ID</b>            |  |
| <b>Concentration</b>       |  |
| <b>Conjugation</b>         | PE   |
| <b>Purification</b>        |  |
| <b>Dilution Range</b>      |  |
| <b>Formulation</b>         | Stabilizing phosphate buffered saline (PBS) solution containing 15 mM sodium azide |
| <b>Isotype</b>             | IgG1   |
| <b>Storage Instruction</b> | Store at 2-8°C upon receipt.   |

**TARGET INFORMATION**

- Gene ID
- Gene Symbol
- Uniprot ID
- Immunogen
- Immunogen Region
- Specificity
- Immunogen Sequence



This product is suitable for in-vitro studies under the RESEARCH USE ONLY [RUO] licence. This product must not be used as for diagnostic or other medical purposes.  
St John's Laboratory Ltd, Knowledge Dock Business Centre, University Way, London, E16 2RD | Tel: 0208 223 3081