

Anti-Lck-interacting molecule [LIME] antibody (STJ16101298)

STJ16101298

GENERAL INFORMATION

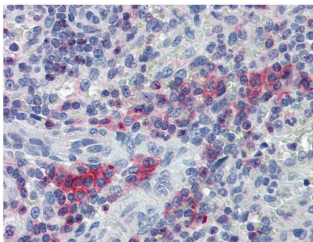
Product Type	Primary antibodies
Short Description	Rabbit polyclonal antibody anti-Lck-interacting molecule [LIME] is suitable for use in Western Blot and Immunohistochemistry research applications.
Applications	WB, IHC-P
Host/Source	Rabbit
Reactivity	Human

PRODUCT PROPERTIES

Clonality	Polyclonal
Clone ID	
Concentration	
Conjugation	Unconjugated
Purification	
Dilution Range	
Formulation	Phosphate buffered saline (PBS) solution with 15 mM sodium azide
Isotype	
Storage	Store at 2-8°C upon receipt.
Instruction	

TARGET INFORMATION

Gene ID
Gene Symbol
Uniprot ID
Immunogen
Immunogen
Region
Specificity
Immunogen
Sequence



This product is suitable for in-vitro studies under the RESEARCH USE ONLY [RUO] licence. This product must not be used as for diagnostic or other medical purposes.
St John's Laboratory Ltd, Knowledge Dock Business Centre, University Way, London, E16 2RD | Tel: 0208 223 3081