

Anti-Kinesin antibody (STJ16101149)

STJ16101149

GENERAL INFORMATION

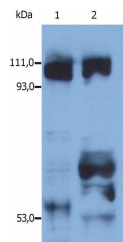
Product Type	Primary antibodies
Short Description	Rabbit polyclonal antibody anti-Kinesin is suitable for use in Western Blot and Immunocytochemistry research applications.
Applications	WB, ICC
Host/Source	Rabbit
Reactivity	Mouse, Pig, Human

PRODUCT PROPERTIES

Clonality	Polyclonal
Clone ID	
Concentration	
Conjugation	Unconjugated
Purification	
Dilution Range	
Formulation	Phosphate buffered saline (PBS) solution with 15 mM sodium azide
Isotype	
Storage Instruction	Store at 2-8°C upon receipt.

TARGET INFORMATION

Gene ID	
Gene Symbol	
Uniprot ID	
Immunogen	
Immunogen Region	
Specificity	
Immunogen Sequence	



This product is suitable for in-vitro studies under the RESEARCH USE ONLY [RUO] licence. This product must not be used as for diagnostic or other medical purposes.
St John's Laboratory Ltd, Knowledge Dock Business Centre, University Way, London, E16 2RD | Tel: 0208 223 3081