

## Anti-Keratin 13+10 antibody [EBS-IF-003] (STJ16101020)

STJ16101020

### GENERAL INFORMATION

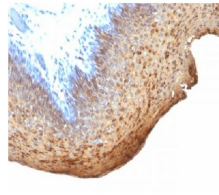
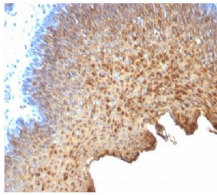
|                          |  |
|--------------------------|--|
| <b>Product Type</b>      | Primary antibodies   |
| <b>Short Description</b> | Mouse monoclonal antibody anti-Keratin 13+10 is suitable for use in Flow Cytometry, Immunohistochemistry, Immunofluorescence and Western Blot research applications. |
| <b>Applications</b>      | FC, IHC-F, IHC-P, IF, WB   |
| <b>Host/Source</b>       | Mouse  |
| <b>Reactivity</b>        | Cat, Dog, Human  |

### PRODUCT PROPERTIES

|                       |                              |
|-----------------------|------------------------------|
| <b>Clonality</b>      | Monoclonal                   |
| <b>Clone ID</b>       | EBS-IF-003                   |
| <b>Concentration</b>  |                              |
| <b>Conjugation</b>    | Unconjugated                 |
| <b>Purification</b>   |                              |
| <b>Dilution Range</b> |                              |
| <b>Formulation</b>    | PBS with 0.02% sodium azide  |
| <b>Isotype</b>        | IgG2ak                       |
| <b>Storage</b>        | Store at 2-8°C upon receipt. |
| <b>Instruction</b>    |                              |

### TARGET INFORMATION

**Gene ID**  
**Gene Symbol**  
**Uniprot ID**  
**Immunogen**  
**Immunogen**  
**Region**  
**Specificity**  
**Immunogen**  
**Sequence**



---

This product is suitable for in-vitro studies under the RESEARCH USE ONLY [RUO] licence. This product must not be used as for diagnostic or other medical purposes.  
St John's Laboratory Ltd, Knowledge Dock Business Centre, University Way, London, E16 2RD | Tel: 0208 223 3081