

Anti-IgM antibody [EBS-huM] (STJ16101013)

STJ16101013

GENERAL INFORMATION

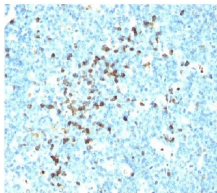
Product Type	Primary antibodies
Short Description	Mouse monoclonal antibody anti-IgM is suitable for use in ELISA, Flow Cytometry and Immunohistochemistry research applications.
Applications	ELISA, FC, IHC-F
Host/Source	Mouse
Reactivity	Human

PRODUCT PROPERTIES

Clonality	Monoclonal
Clone ID	EBS-huM
Concentration	
Conjugation	Unconjugated
Purification	
Dilution Range	
Formulation	PBS with 0.02% sodium azide
Isotype	IgG1k
Storage Instruction	Store at 2-8°C upon receipt.

TARGET INFORMATION

Gene ID	NA
Gene Symbol	NA
Uniprot ID	IGM_HUMAN
Immunogen	
Immunogen Region	
Specificity	
Immunogen Sequence	



This product is suitable for in-vitro studies under the RESEARCH USE ONLY [RUO] licence. This product must not be used as for diagnostic or other medical purposes.
St John's Laboratory Ltd, Knowledge Dock Business Centre, University Way, London, E16 2RD | Tel: 0208 223 3081