

## Anti-MRP1 antibody [MRPm6] (STJ16100887)

STJ16100887

### GENERAL INFORMATION

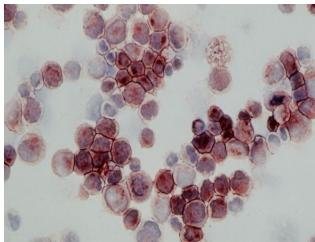
<b>Product Type</b>	Primary antibodies
<b>Short Description</b>	Mouse monoclonal antibody anti-MRP1 is suitable for use in Flow Cytometry, Western Blot, Immunocytochemistry, Immunohistochemistry and Immunohistochemistry research applications.
<b>Applications</b>	FC, WB, ICC, IHC-F, IHC-P
<b>Host/Source</b>	Mouse
<b>Reactivity</b>	Human

### PRODUCT PROPERTIES

<b>Clonality</b>	Monoclonal
<b>Clone ID</b>	MRPm6
<b>Concentration</b>	
<b>Conjugation</b>	Unconjugated
<b>Purification</b>	
<b>Dilution Range</b>	FC WB ICC IHC-F IHC-P (1:20-1:50)
<b>Formulation</b>	Serum free tissue culture supernatant with 07% BSA and 0.1% sodium azide
<b>Isotype</b>	IgG1
<b>Storage</b>	Store at 2-8°C upon receipt.
<b>Instruction</b>	

### TARGET INFORMATION

<b>Gene ID</b>	<a href="#">4437</a>
<b>Gene Symbol</b>	<a href="#">MSH3</a>
<b>Uniprot ID</b>	<a href="#">MSH3_HUMAN</a>
<b>Immunogen</b>	
<b>Immunogen</b>	
<b>Region</b>	
<b>Specificity</b>	
<b>Immunogen</b>	
<b>Sequence</b>	



---

This product is suitable for in-vitro studies under the RESEARCH USE ONLY [RUO] licence. This product must not be used as for diagnostic or other medical purposes.  
St John's Laboratory Ltd, Knowledge Dock Business Centre, University Way, London, E16 2RD | Tel: 0208 223 3081