

Anti-Tumour Antigens of Epithelial Origin antibody [MG1] (STJ16100727)

STJ16100727

GENERAL INFORMATION

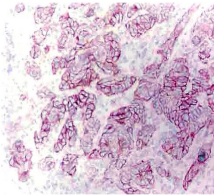
Product Type	Primary antibodies
Short Description	Mouse monoclonal antibody anti-Tumour antigens of Epithelial Origin is suitable for use in Immunohistochemistry, Flow Cytometry, Western Blot, Immunoprecipitation and ELISA research applications.
Applications	IHC-P, IHC-F, FC, WB, IP, ELISA
Host/Source	Mouse
Reactivity	Rat

PRODUCT PROPERTIES

Clonality	Monoclonal
Clone ID	MG1
Concentration	
Conjugation	Unconjugated
Purification	
Dilution Range	
Formulation	Culture supernatant with 0.05% sodium azide
Isotype	IgG2a
Storage Instruction	Store at 2-8°C upon receipt.

TARGET INFORMATION

Gene ID	
Gene Symbol	
Uniprot ID	
Immunogen	
Immunogen Region	
Specificity	
Immunogen Sequence	



This product is suitable for in-vitro studies under the RESEARCH USE ONLY [RUO] licence. This product must not be used as for diagnostic or other medical purposes.
St John's Laboratory Ltd, Knowledge Dock Business Centre, University Way, London, E16 2RD | Tel: 0208 223 3081