

Anti-Endothelium antibody [PAL-E] (STJ16100677)

STJ16100677

GENERAL INFORMATION

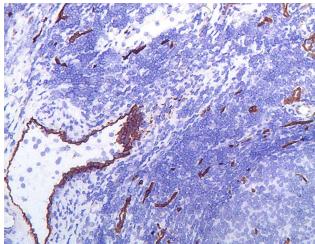
Product Type	Primary antibodies
Short Description	Mouse monoclonal antibody anti-Endothelium is suitable for use in Immunohistochemistry (1:20 research applications).
Applications	IHC-F (1:20)
Host/Source	Mouse
Reactivity	Human, Rabbit, Goat, Dog, Pig

PRODUCT PROPERTIES

Clonality	Monoclonal
Clone ID	PAL-E
Concentration	
Conjugation	Unconjugated
Purification	
Dilution Range	IHC-F (1:20)
Formulation	Culture medium with 0.01M Sodium Azide
Isotype	IgG2a
Storage Instruction	Store at 2-8°C upon receipt.

TARGET INFORMATION

Gene ID
Gene Symbol
Uniprot ID
Immunogen
Immunogen Region
Specificity
Immunogen Sequence



This product is suitable for in-vitro studies under the RESEARCH USE ONLY [RUO] licence. This product must not be used as for diagnostic or other medical purposes.
St John's Laboratory Ltd, Knowledge Dock Business Centre, University Way, London, E16 2RD | Tel: 0208 223 3081