

Anti-lambda light chain antibody [48] (STJ16100579)

STJ16100579

GENERAL INFORMATION

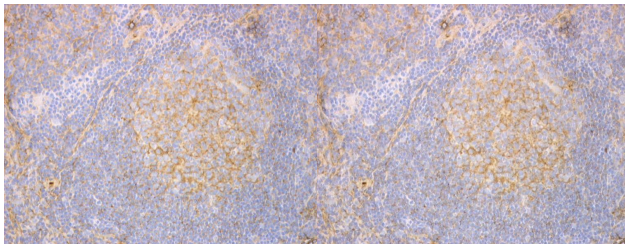
Product Type	Primary antibodies
Short Description	Mouse monoclonal antibody anti-lambda light chain is suitable for use in Immunohistochemistry, Western Blot and ELISA research applications.
Applications	IHC-P, IHC-F, WB, ELISA
Host/Source	Mouse
Reactivity	Human

PRODUCT PROPERTIES

Clonality	Monoclonal
Clone ID	48
Concentration	
Conjugation	Unconjugated
Purification	
Dilution Range	IHC-P (1:50) IHC-F (1:50) WB ELISA
Formulation	Culture medium with 0.01M Sodium Azide
Isotype	IgG1
Storage Instruction	Store at 2-8°C upon receipt.

TARGET INFORMATION

Gene ID
Gene Symbol
Uniprot ID
Immunogen
Immunogen
Region
Specificity
Immunogen
Sequence



This product is suitable for in-vitro studies under the RESEARCH USE ONLY [RUO] licence. This product must not be used as for diagnostic or other medical purposes.
St John's Laboratory Ltd, Knowledge Dock Business Centre, University Way, London, E16 2RD | Tel: 0208 223 3081