

Anti-Alpha-Fetoprotein antibody [D10] (STJ16100501)

STJ16100501

GENERAL INFORMATION

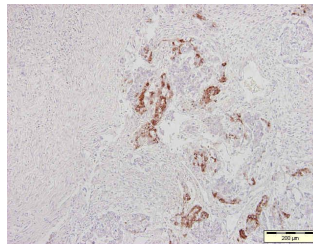
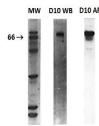
Product Type	Primary antibodies
Short Description	Mouse monoclonal antibody anti-Alpha-Fetoprotein is suitable for use in ELISA, Flow Cytometry, Immunohistochemistry and Immunofluorescence research applications.
Applications	ELISA, FC, IHC-F, IF
Host/Source	Mouse
Reactivity	Human

PRODUCT PROPERTIES

Clonality	Monoclonal
Clone ID	D10
Concentration	
Conjugation	Unconjugated
Purification	
Dilution Range	
Formulation	PBS with 0.02% sodium azide
Isotype	IgG1
Storage	Store at 2-8°C upon receipt.
Instruction	

TARGET INFORMATION

Gene ID	174
Gene Symbol	AFP
Uniprot ID	FETA_HUMAN
Immunogen	
Immunogen	
Region	
Specificity	
Immunogen	
Sequence	



This product is suitable for in-vitro studies under the RESEARCH USE ONLY [RUO] licence. This product must not be used as for diagnostic or other medical purposes.
St John's Laboratory Ltd, Knowledge Dock Business Centre, University Way, London, E16 2RD | Tel: 0208 223 3081