

## Anti-Alpha-Tubulin antibody [TU-01] (STJ16100473)

STJ16100473

### GENERAL INFORMATION

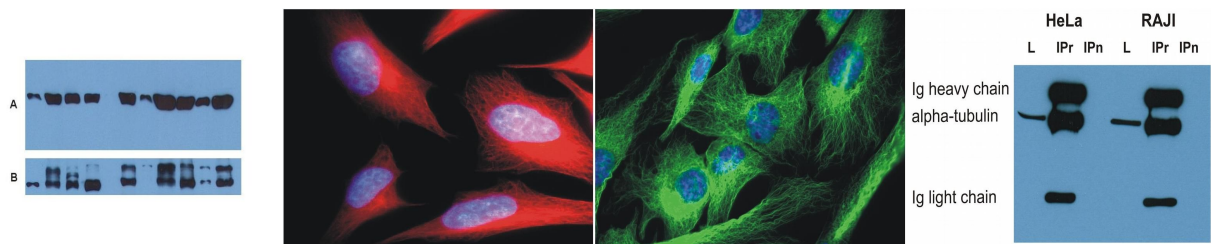
<b>Product Type</b>	Primary antibodies
<b>Short Description</b>	Mouse monoclonal antibody anti-Alpha-Tubulin is suitable for use in Western Blot, Immunohistochemistry, Immunocytochemistry, Immunoprecipitation and Flow Cytometry research applications.
<b>Applications</b>	WB, IHC-P, ICC, IP, FC
<b>Host/Source</b>	Mouse
<b>Reactivity</b>	Mouse, Pig, Human, Turkey, Eisenia, Paramecium, Nicotiana, Yeast, A.thaliana

### PRODUCT PROPERTIES

<b>Clonality</b>	Monoclonal
<b>Clone ID</b>	TU-01
<b>Concentration</b>	
<b>Conjugation</b>	Unconjugated
<b>Purification</b>	
<b>Dilution Range</b>	
<b>Formulation</b>	Phosphate buffered saline (PBS) solution with 15 mM sodium azide
<b>Isotype</b>	IgG1
<b>Storage</b>	Store at 2-8°C upon receipt.
<b>Instruction</b>	

### TARGET INFORMATION

<b>Gene ID</b>	
<b>Gene Symbol</b>	
<b>Uniprot ID</b>	
<b>Immunogen</b>	
<b>Immunogen Region</b>	
<b>Specificity</b>	
<b>Immunogen Sequence</b>	



This product is suitable for in-vitro studies under the RESEARCH USE ONLY [RUO] licence. This product must not be used as for diagnostic or other medical purposes.  
 St John's Laboratory Ltd, Knowledge Dock Business Centre, University Way, London, E16 2RD | Tel: 0208 223 3081