

Anti-Kappa Light Chain antibody [L1C1] (STJ16100380)

STJ16100380

GENERAL INFORMATION

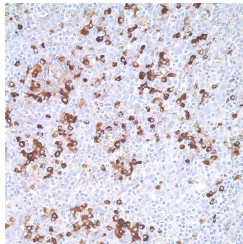
| | |
|--------------------------|---|
| Product Type | Primary antibodies |
| Short Description | Mouse monoclonal antibody anti-Kappa Light Chain is suitable for use in Immunohistochemistry research applications. |
| Applications | IHC-P |
| Host/Source | Mouse |
| Reactivity | Human |

PRODUCT PROPERTIES

| | |
|----------------------------|---|
| Clonality | Monoclonal |
| Clone ID | L1C1 |
| Concentration | |
| Conjugation | Unconjugated |
| Purification | |
| Dilution Range | IHC 1:100 – 1:500 |
| Formulation | Tris Buffer, pH 7.3-7.7, containing 1% BSA and <0.1% Sodium Azide |
| Isotype | IgG1k |
| Storage Instruction | Store at 2-8°C upon receipt. |

TARGET INFORMATION

Gene ID
Gene Symbol
Uniprot ID
Immunogen
Immunogen Region
Specificity
Immunogen Sequence



This product is suitable for in-vitro studies under the RESEARCH USE ONLY [RUO] licence. This product must not be used as for diagnostic or other medical purposes.
St John's Laboratory Ltd, Knowledge Dock Business Centre, University Way, London, E16 2RD | Tel: 0208 223 3081