

Anti-CA-19.9 antibody [121SLE] (STJ16100279)

STJ16100279

GENERAL INFORMATION

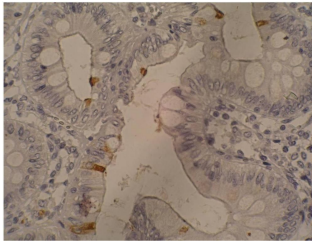
Product Type	Primary antibodies
Short Description	Mouse monoclonal antibody anti-CA-19.9 is suitable for use in Immunohistochemistry and ELISA research applications.
Applications	IHC-P, ELISA
Host/Source	Mouse
Reactivity	Human

PRODUCT PROPERTIES

Clonality	Monoclonal
Clone ID	121SLE
Concentration	
Conjugation	Unconjugated
Purification	
Dilution Range	
Formulation	Tris buffered saline (TBS) solution with 15 mM sodium azide
Isotype	IgM
Storage Instruction	Store at 2-8°C upon receipt.

TARGET INFORMATION

Gene ID	
Gene Symbol	
Uniprot ID	
Immunogen	
Immunogen Region	
Specificity	
Immunogen Sequence	



This product is suitable for in-vitro studies under the RESEARCH USE ONLY [RUO] licence. This product must not be used as for diagnostic or other medical purposes.
St John's Laboratory Ltd, Knowledge Dock Business Centre, University Way, London, E16 2RD | Tel: 0208 223 3081