

## Anti-Keratin 13 antibody [2D7] (STJ16100243)

STJ16100243

### GENERAL INFORMATION

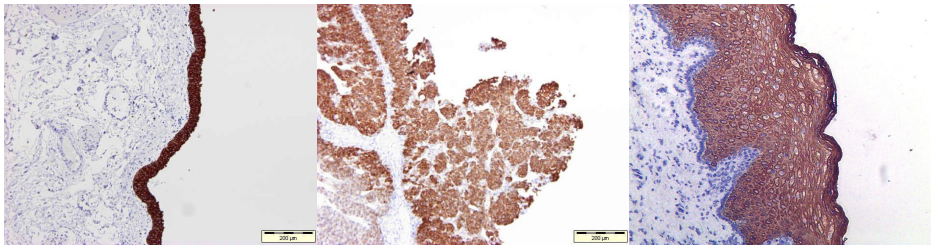
<b>Product Type</b>	Primary antibodies
<b>Short Description</b>	Mouse monoclonal antibody anti-Keratin 13 is suitable for use in Immunohistochemistry and Western Blot research applications.
<b>Applications</b>	IHC-F, WB
<b>Host/Source</b>	Mouse
<b>Reactivity</b>	Human

### PRODUCT PROPERTIES

<b>Clonality</b>	Monoclonal
<b>Clone ID</b>	2D7
<b>Concentration</b>	
<b>Conjugation</b>	Unconjugated
<b>Purification</b>	
<b>Dilution Range</b>	IHC-P 1:5-1:25
<b>Formulation</b>	Culture medium with 0.01M Sodium Azide
<b>Isotype</b>	IgG2b
<b>Storage Instruction</b>	Store at 2-8°C upon receipt.

### TARGET INFORMATION

<b>Gene ID</b>	3860
<b>Gene Symbol</b>	KRT13
<b>Uniprot ID</b>	K1C13_HUMAN
<b>Immunogen</b>	
<b>Immunogen Region</b>	
<b>Specificity</b>	
<b>Immunogen Sequence</b>	



This product is suitable for in-vitro studies under the RESEARCH USE ONLY [RUO] licence. This product must not be used as for diagnostic or other medical purposes.  
St John's Laboratory Ltd, Knowledge Dock Business Centre, University Way, London, E16 2RD | Tel: 0208 223 3081