

Anti-Beta-2 microglobulin antibody [B2M-01] (STJ16100027)
STJ16100027

GENERAL INFORMATION

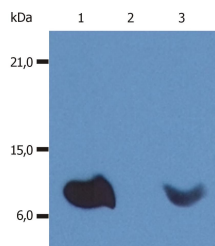
Product Type Primary antibodies
Short Description Mouse monoclonal antibody anti-Beta-2 microglobulin is suitable for use in Flow Cytometry, Immunoprecipitation, Western Blot, Immunohistochemistry, Immunocytochemistry and ELISA research applications.
Applications FC, IP, WB, IHC-P, ICC, ELISA
Host/Source Mouse
Reactivity Human

PRODUCT PROPERTIES

Clonality Monoclonal
Clone ID B2M-01
Concentration
Conjugation Unconjugated
Purification
Dilution Range FC 0
 5-1
 0 µg/million cells in 0
 1 ml.-WB 2-4 µg/ml-ELISA to be determined-IHC (paraffin) Recommended
Formulation Phosphate buffered saline (PBS) solution with 15 mM sodium azide
Isotype IgG2a
Storage Instruction Store at 2-8°C upon receipt.

TARGET INFORMATION

Gene ID
Gene Symbol
Uniprot ID
Immunogen
Immunogen Region
Specificity
Immunogen Sequence



This product is suitable for in-vitro studies under the RESEARCH USE ONLY [RUO] licence. This product must not be used as for diagnostic or other medical purposes.
 St John's Laboratory Ltd, Knowledge Dock Business Centre, University Way, London, E16 2RD | Tel: 0208 223 3081