

Human CA19-9 (Carbohydrate antigen19-9) Sandwich ELISA Kit (STJ150508)

STJ150508

GENERAL INFORMATION

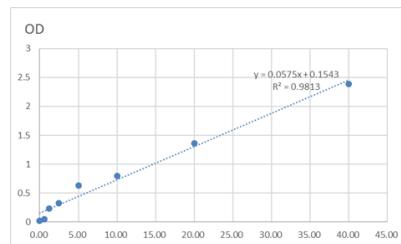
Product Type	Kits
Short Description	This Human CA19-9 (Carbohydrate antigen19-9) Sandwich ELISA Kit is an in-vitro enzyme-linked immunosorbent assay for the measurement of samples in cell culture supernatant, serum and plasma (EDTA, citrate, heparin).
Applications	ELISA
Reactivity	Human

PRODUCT PROPERTIES

Detection	6.25--400U/mL
Sensitivity	400U/mL
Detection Limit	6.25--400U/mL
Assay Time	
Storage	Store at 4°C for 6 months.
Instruction	
Note	FOR RESEARCH USE ONLY (RUO).

TARGET INFORMATION

Sample Types	Serum, Plasma, Biological Fluids
Gene	
Symbol	
Uniprot ID	



This product is suitable for in-vitro studies under the RESEARCH USE ONLY [RUO] licence. This product must not be used as for diagnostic or other medical purposes.
 St John's Laboratory Ltd, Knowledge Dock Business Centre, University Way, London, E16 2RD | Tel: 0208 223 3081