

## Anti-mNeptune antibody (STJ140253)

STJ140253

### GENERAL INFORMATION

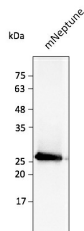
<b>Product Type</b>	Primary antibodies
<b>Short Description</b>	Goat polyclonal antibody anti-mNeptune is suitable for use in Western Blot, Immunofluorescence, Immunohistochemistry and Immune Electron Microscopy research applications.
<b>Applications</b>	WB, IF, IHC-P, IHC-F, IEM
<b>Host/Source</b>	Goat
<b>Reactivity</b>	Far-RFP

### PRODUCT PROPERTIES

<b>Clonality</b>	Polyclonal
<b>Clone ID</b>	
<b>Concentration</b>	3 mg/mL
<b>Conjugation</b>	Unconjugated
<b>Purification</b>	Epitope affinity purified
<b>Dilution Range</b>	WB:1:500-1:5000 IF:1:50-1:500 IHC-P:1:50-1:500 IHC-F:1:50-1:500 IEM:1:50-1:500
<b>Formulation</b>	PBS, 20% glycerol and 0.05% sodium azide
<b>Isotype</b>	IgG
<b>Storage</b>	For continuous use, store at 2-8 C for one-two days. For extended storage, store in -20 C freezer. Working dilution samples should be discarded if not used within 12 hours.
<b>Instruction</b>	

### TARGET INFORMATION

<b>Gene ID</b>	
<b>Gene Symbol</b>	
<b>Uniprot ID</b>	
<b>Immunogen</b>	Affinity purified recombinant fluorescent protein (HIR78_01785 from Bacillus subtilis) and produced in E. coli.
<b>Immunogen Region</b>	
<b>Specificity</b>	In lysates of transfected cells with the plasmid containing the fluorescent sequence, detects the recombinant protein by Western blot.
<b>Immunogen Sequence</b>	



Anti-mNeptune antibody at 1/2, 500 dilution using HEK293 transfected cell lysates at 40 µg per lane; rabbit polyclonal to goat IgG (HRP) at 1:10000 dilution