

## Anti-tdTomato antibody {DyLight®633} (STJ140220)

STJ140220

### GENERAL INFORMATION

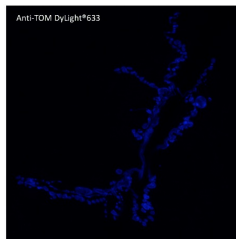
|                          |  |
|--------------------------|--|
| <b>Product Type</b>      | Primary antibodies   |
| <b>Short Description</b> | Goat polyclonal antibody anti-tdTomato is suitable for use in Western Blot, Immunofluorescence and Immunohistochemistry research applications. |
| <b>Applications</b>      | WB, IF, IHC-F  |
| <b>Host/Source</b>       | Goat   |
| <b>Reactivity</b>        | tdTomato, mCherry, RFP   |

### PRODUCT PROPERTIES

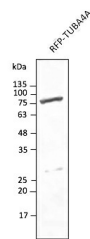
|                       |  |
|-----------------------|--|
| <b>Clonality</b>      | Polyclonal   |
| <b>Clone ID</b>       |  |
| <b>Concentration</b>  | 2.5 mg/mL  |
| <b>Conjugation</b>    | DyLight®633  |
| <b>Purification</b>   | Epitope affinity purified  |
| <b>Dilution Range</b> | WB: 1:500-1:2000<br>IF: 1:50-1:500<br>IHC-F: 1:50-1:1000   |
| <b>Formulation</b>    | PBS, 20% glycerol and 0.05% sodium azide   |
| <b>Isotype</b>        | IgG  |
| <b>Storage</b>        | For continuous use, store at 2-8 C for one-two days. For extended storage, store in -20 C freezer. Working dilution samples should be discarded if not used within 12 hours. |
| <b>Instruction</b>    |  |

### TARGET INFORMATION

|                           |  |
|---------------------------|--|
| <b>Gene ID</b>            |  |
| <b>Gene Symbol</b>        |  |
| <b>Uniprot ID</b>         |  |
| <b>Immunogen</b>          | Purified recombinant peptide produced in E. coli   |
| <b>Immunogen Region</b>   |  |
| <b>Specificity</b>        | In 293HEK cells transfected with cds plasmid detects a band of 55 kDa by Western blot. It also detects tdTomato in brain sections by IHC. This antibody is specific for tdTomato and mCherry proteins. It does not cross-react to GFP (green fluorescent p |
| <b>Immunogen Sequence</b> |  |



Immunofluorescence in Drosophila larvae expressing tdTomato fusion protein in neurons using anti-tdTomato conjugated to DyLight®633 at 1/500



Anti-tdTomato antibody conjugated to DyLight® 633 at 1/2, 500 dilution using HEK293 transfected cell lysates at 50 µg per lane

This product is suitable for in-vitro studies under the RESEARCH USE ONLY [RUO] licence. This product must not be used as for diagnostic or other medical purposes.  
St John's Laboratory Ltd, Knowledge Dock Business Centre, University Way, London, E16 2RD | Tel: 0208 223 3081